

***On/Off the Grid***

**Hasan Elahi, Adam Fowler, Teo González, Courtney Jordan, Amy Lin,  
Linn Meyers, Tadashi Moriyama, Molly Springfield, Yuriko Yamaguchi**

**February 13 - March 20, 2010**

**Opening reception with the artists: Saturday, February 13, 6:00-8:00PM**

Irvine Contemporary is pleased to present *On/Off the Grid*, a curated exhibition of works by artists who work with--and against--the concepts of grids, networks, architecture, and abstract systems. Artists include Hasan Elahi, Adam Fowler, Teo González, Courtney Jordan, Amy Lin, Linn Meyers, Tadashi Moriyama, Molly Springfield, Yuriko Yamaguchi. Opening reception with the artists: Saturday, February 13, 6:00-8:00PM.

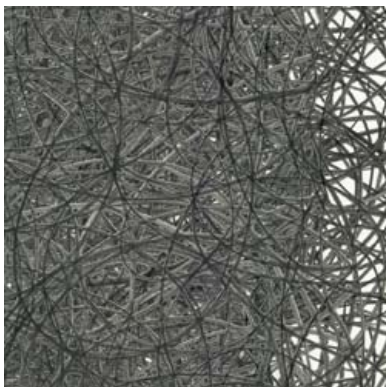
Playing on all senses of the metaphor "grid," the exhibition features works that engage with formal systems or embody a critique of moving with, or against, grids, networks, and a priori abstract structures. Being "on the grid" today can mean being connected, part of the network, plugged into the system, knowable and known to others; "off the grid" means the opposite, disconnected, isolated, inaccessible, unknowable. Networks and grids have been the main modeling systems for many domains of life--idealized abstractions, information technology, texts, digital media, social organization, political power, complexity theory. *On/Off the Grid* presents a survey of ways that artists visualize the significance of grids, networks, and complexity across many artistic mediums.

Yuriko Yamaguchi participates in the exhibition courtesy of Adamson Gallery, and Linn Meyers courtesy of G Fine Art. We want to thank Adamson Gallery and G Fine Art for their collaboration in this exhibition.



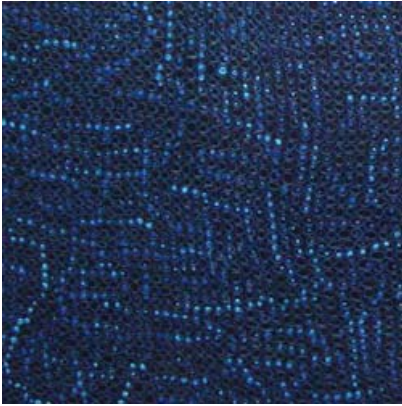
**Hasan Elahi**

Hasan Elahi is a multimedia, locative, Internet-based artist who is working beyond the boundaries of performance and time-based art. His main project, *TrackingTransience*, is a self-surveillance project in which his location and photographs of daily activities are documented in real time using GPS and Google Earth. His project is best experienced on location in cyberspace ([trackingtransience.net](http://trackingtransience.net)). He was interviewed about his project on the Colbert Report in 2008. For the exhibition, Hasan Elahi will present a video compilation of a year of life-tracking through map locations and daily images.



**Adam Fowler**

Adam Fowler constructs intricately layered line drawings that form webs or networks of density and complexity. The artist draws graphite lines on paper and then cuts away the paper ground to leave only the graphite line. He then assembles many layers of drawn and cut lines to form a unique composition. His works can be read as 3D drawings, or a hybrid form combining drawing, sculpture and collage. Adam Fowler lives and works in Brooklyn, NY.



**Teo González**

Irvine Contemporary gallery artist Teo González has been elaborating the ideas of grid structure, organic form, and process for many years. His recent works are explorations "off the grid," allowing new organic shapes to emerge as disruptions of the abstract structure. Irvine gallery artist Teo González has been in many national and international exhibitions, and his works are in the collections of Museum of Modern Art, the National Gallery of Art, and many other institutions. Teo González lives and works in Brooklyn, NY.



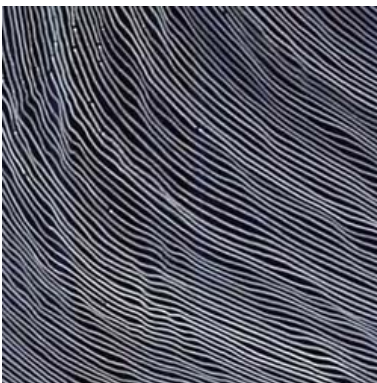
**Courtney Jordan**

Courtney Jordan's works are drawings in ink and graphite on mylar that reconceive architectural forms and structures from the human built environment. Her method of abstracting and recombining forms has resulted in a new poetics of architectural form. Her works are meditations on the grid structures of cities and architecture. Irvine Contemporary gallery artist Courtney Jordan lives and works in Boston, MA, and has an MFA from the Maryland Institute College of Art and a BFA from the Rhode Island School of Design.



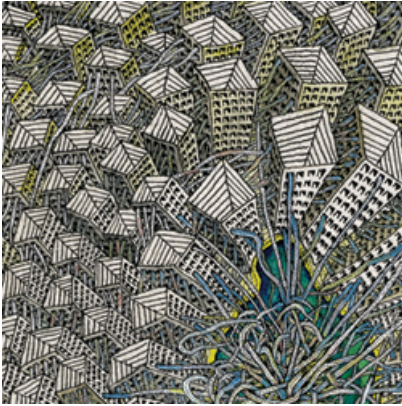
**Amy Lin**

Amy Lin's drawings in color pencil on paper visualize the worlds of humanly-imposed abstract order as well as the natural order of molecules and cells. Her works are meditative and reflective, often recalling Asian calligraphy or the highly detailed ornamentation in illuminated manuscripts. Her drawings also set up an interplay between minimal order and open or negative space, showing how much can be evoked by what is left unsaid. Amy Lin lives and works in Fairfax, VA.



**Linn Meyers**

Linn Meyers creates drawings using the interplay of grids, circles, and organic lines that evoke both earthly and conceptual topographies. Her works often begin with the imposition of a single line, and the flow of form that emerges when lines are drawn very closely together, but never intersecting or crossing. Her works are in many prestigious public collections, including the Hirshhorn Museum. A new wall drawing, *Mandala*, will be on view at the Phillips Collection, Feb. 11-May 2. Linn Meyers lives and works in Washington, DC, and is represented by G Fine Art. (Images of Linn Meyers' works courtesy of G Fine Art.)



### **Tadashi Moriyama**

Tadashi Moriyama creates drawings of interlinked cityscapes, architectural forms, and technology networks, which are often imposed on a natural order that seeps through the humanly built structures. Human figures are ambiguously connected and disrupted by the networked world, and his drawings provide powerful emotional responses to our current virtual and material grids and networks. Tadashi Moriyama was born in Japan, received his MFA from the University of Pennsylvania, and lives and works in Brooklyn, NY.



### **Molly Springfield**

Molly Springfield has been focusing on drawings of texts and historically significant books. Her ongoing project uses texts and books as visual source materials, particularly those that reveal visionary moments in the history of how people experience, organize, and reproduce information. Text and print layout is one of most fundamental grid structures of our culture: lines, columns, and page layout have successfully migrated from hand-written books, to print, to the Web "page," and now to eBook devices. Her drawings and installations show how books and texts put us "on the grid" in a long historical sequence. Molly Springfield received her MFA from UC-Berkeley, and lives and works in Washington, DC.



### **Yuriko Yamaguchi**

Yuriko Yamaguchi creates abstract sculptures and drawings that suggest organic networks and interconnected spaces. Her sculptures and installations are composed with small, thin shapes of resin connected with fine copper wires. Her compositions recall the "infinity nets" of Kusama and the organic installations of Eva Hesse, but Yuriko Yamaguchi's works are clearly inserted into our current technological world and visualizations of organic and computer networks. Yuriko Yamaguchi has been in many national and international exhibitions, and lives and works in McLean, VA. Yuriko Yamaguchi is represented by Adamson Gallery. (Images of Yuriko Yamaguchi's works courtesy of Adamson Gallery.)

---

For further information, contact Lauren Gentile, Assistant Director and Director of Sales (202-332-8767, [lauren@irvinecontemporary.com](mailto:lauren@irvinecontemporary.com))

---